

MYBOOST HORIZONTAL TRIPLE COLD WATER BOOSTER SET

Cold water booster sets maintain consistent water pressure and flow in buildings with high demand, supplementing inadequate mains supply. Common in commercial and large residential properties, they work with storage tanks to ensure sufficient water availability. Available in various sizes and designs, these sets come with an energy efficient variable speed drive with autoadapt technology. They come in single, twin, or triple pump systems, with some models placing pumps inside tanks for space efficiency and noise reduction in plant rooms.



PRODUCT CODE STRUCTURE

MYBOOST 3H CME 5-3 11

Product Type

No. of pumps

Pump model

Motor KW

PRODUCT FEATURES



Ideal for large buildings with high water demand, including high-rise apartments and commercial complexes.



Features advanced control systems for regulating and balancing pump operation, ensuring energy-efficient performance.



Optimised for use in high-pressure environments, where maintaining flow across several floors or zones is critical.



Easy installation with flexibility for horizontal configurations.



Ensures maximum water pressure and distribution, even during peak usage times.



Minimises system downtime by offering redundancy; if one pump fails, the others continue to operate seamlessly.

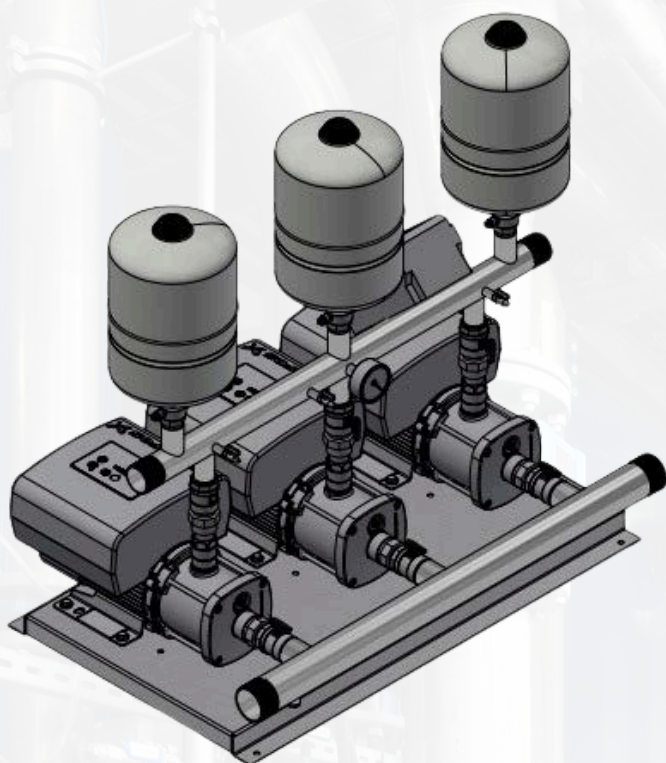


Provides enhanced system stability and improved pressure management, protecting plumbing systems and appliances from pressure damage.



Long-term cost savings through efficient pump performance and reduced maintenance needs.

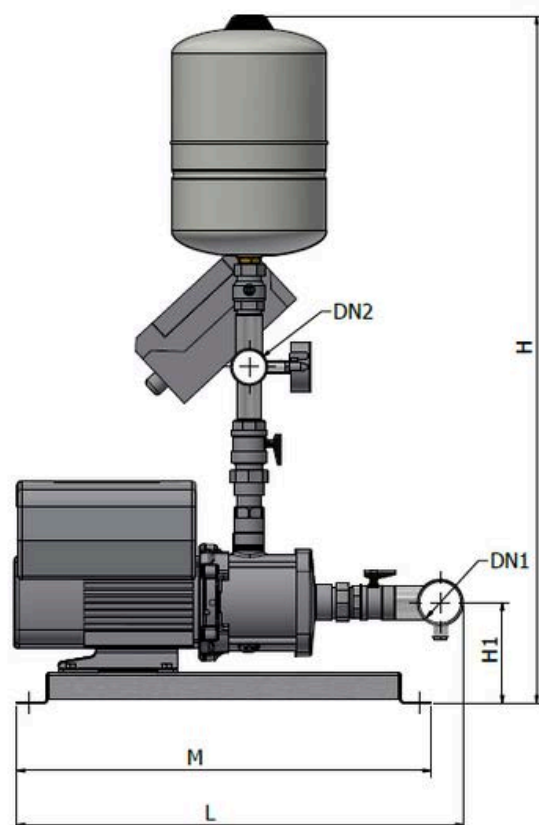
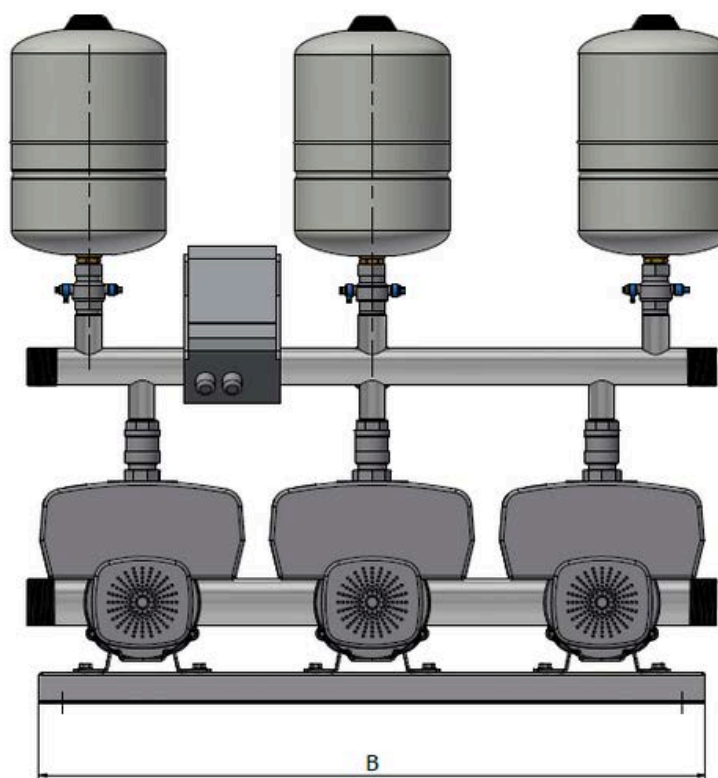




PRODUCT OVERVIEW

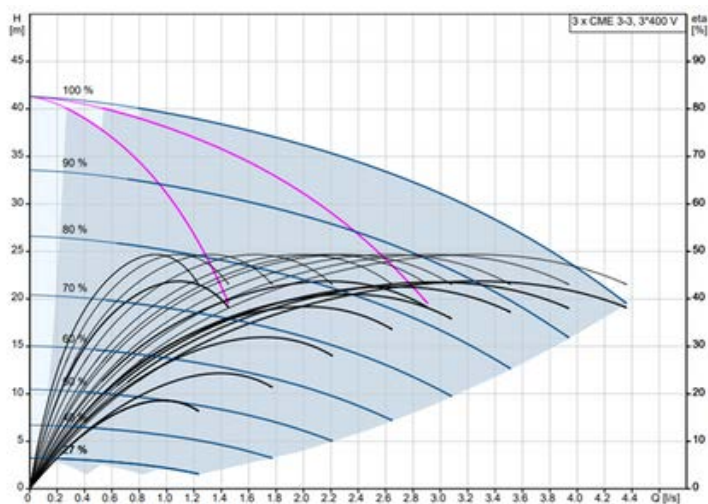
The MYBOOST Horizontal Triple Pump Cold Water Booster Set is a compact, energy-efficient solution with a variable speed drive. Featuring three horizontally configured Grundfos CME pumps, it ensures consistent water pressure. Ideal for commercial buildings, this system delivers reliable performance while optimizing efficiency. Its durable design makes it a practical choice for maintaining steady pressure in modest water systems, enhancing overall functionality and reliability.

Liquid Handled	Type of Liquid	Water, Moderate solutions, Glycol, Viscous Fluid
	Temperature	Min -20 Max + 120 C
Max Chlorine Content		500PPM
Max Working Pressure (MPa)		1
Construction	Impeller	Closed Centrifugal Type
	Motor Bearings	Screened Ball Bearing
Pipe Connection	Suction	2 1/2"
	Discharge	2"
Material	Casing	EN 1.4301 (AISI 304)
	Impeller	EN 1.4301 (AISI 304)
	intermediate Casing	EN 1.4301 (AISI 304)
	O-Rings	EPDM
	Shaft Seals	Ceramic / Carbon / EPDM
	Liner Ring	EN 1.4301 (AISI 304) + PPS
	Casing Cover	EN 1.4301 (AISI 304)
	Shaft Seals	EN 1.4301 (AISI 304) wet extension
	Bracket	EN AB-AISI11Cu2 (Fe)(Die cast Aluminium)
	Manifold	304 Stainless Steel
	Baseplate	Galvanised Steel
	NRV	Stainless Steel Grade 304
	Check Valves	Stainless Steel & EPDM
	Pressure Gauge	Glycerine Pressure Gauge
	Pressure Sensor	Stainless steel body, EPDM O-Rings

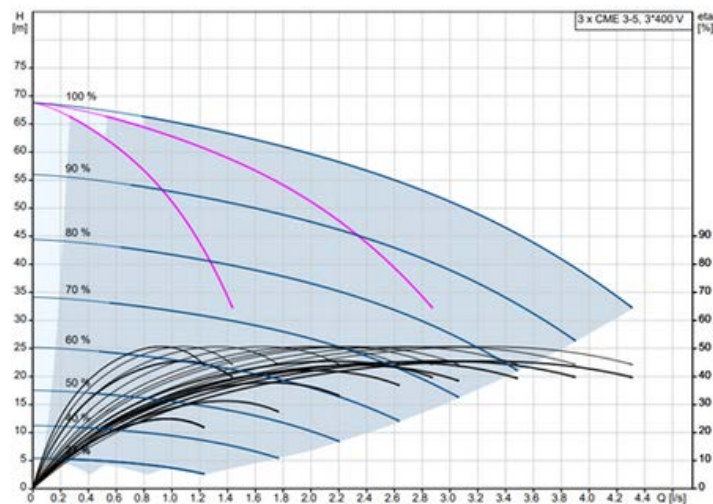


MODEL REF	DN1	DN2	B	H	H1	L	M
MY3H CME3-3 3X8	2 1/2"	2"	900	920	130	676	540
MY3H CME3-5 3X8	2 1/2"	2"	900	920	130	725	540
MY3H CME3-7 3X8	2 1/2"	2"	900	920	130	834	540
MY3H CME5-3 3X8	2 1/2"	2"	900	920	130	608	540
MY3H CME5-5 3X8	2 1/2"	2"	900	920	130	656	540
MY3H CME5-7 3X8	2 1/2"	2"	900	920	130	704	540
MY3H CME10-2 3X8	2 1/2"	2"	900	920	130	689	540
MY3H CME10-3 3X8	2 1/2"	2"	900	920	130	722	540
MY3H CME10-4 3X8	2 1/2"	2"	900	920	130	739	540

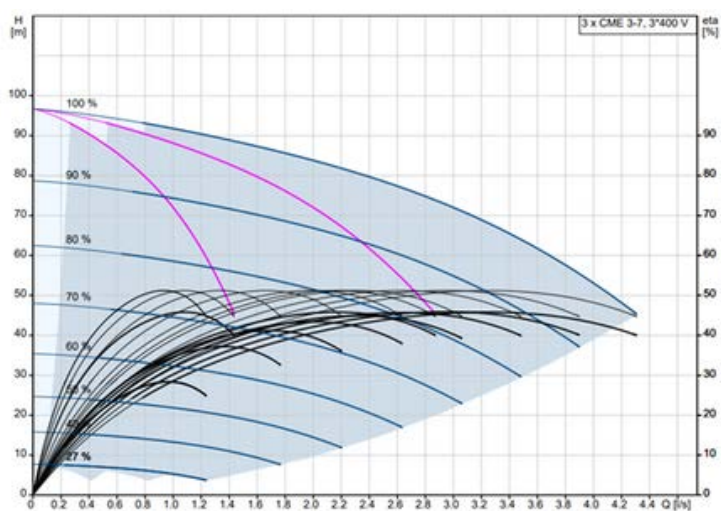
MYBOOST - 3H - CME - 3 - 3



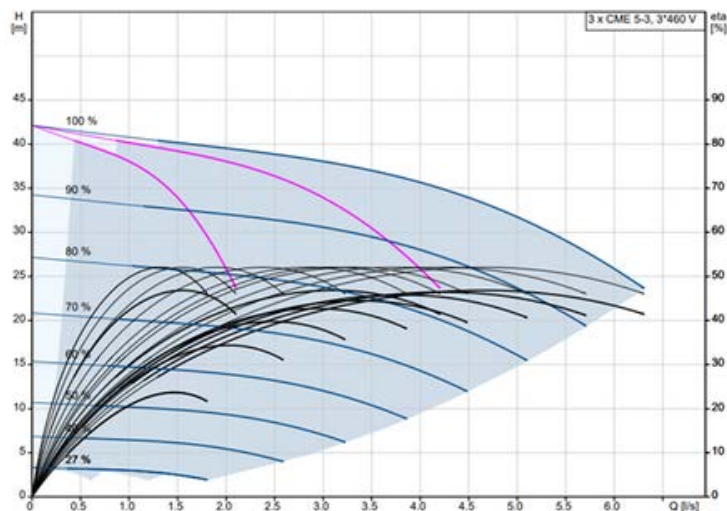
MYBOOST - 3H - CME - 3 - 5



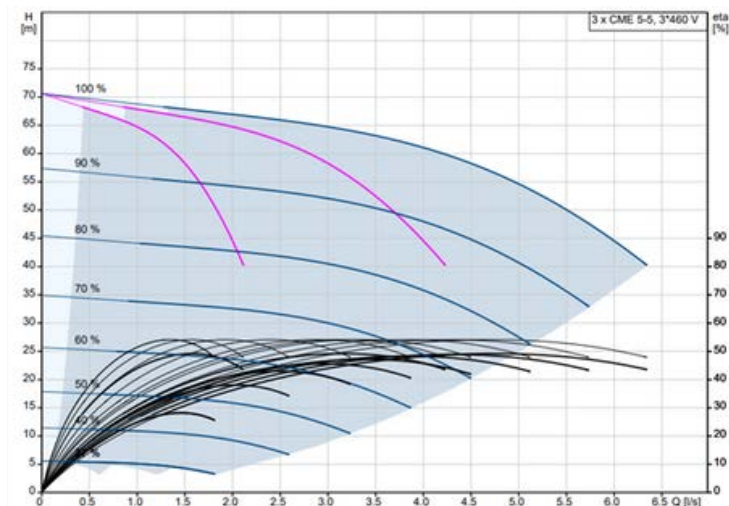
MYBOOST - 3H - CME - 3 - 7



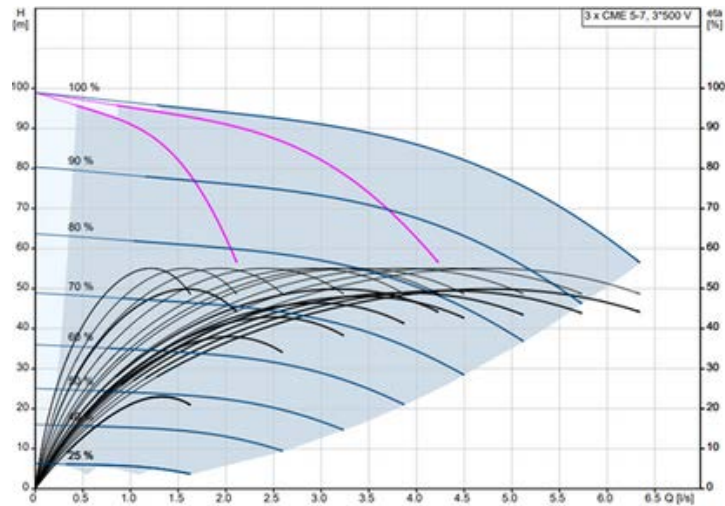
MYBOOST - 3H - CME - 5 - 3



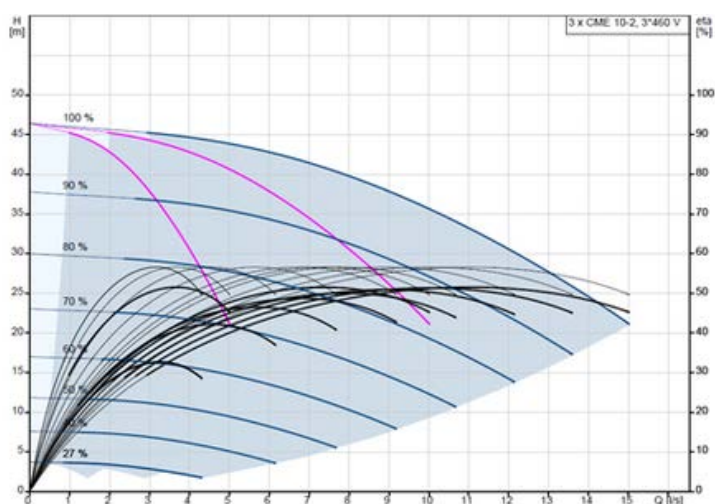
MYBOOST - 3H - CME - 5 - 5



MYBOOST - 3H - CME - 5 - 7



MYBOOST - 3H - CME - 10 - 2



MYBOOST - 3H - CME - 10 - 3

