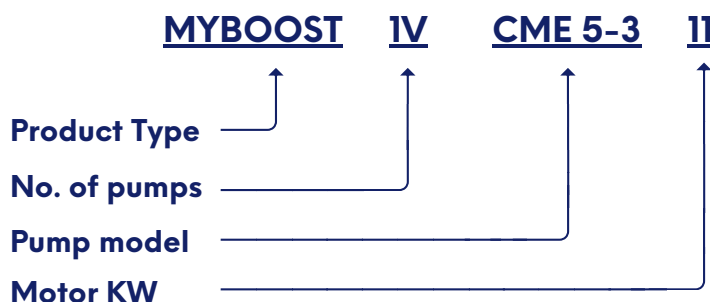


## MYBOOST VERTICAL SINGLE COLD WATER BOOSTER SET

Cold water booster sets maintain consistent water pressure and flow in buildings with high demand, supplementing inadequate mains supply. Common in commercial and large residential properties, they work with storage tanks to ensure sufficient water availability. Available in various sizes and designs, these sets come with an energy efficient variable speed drive with autoadapt technology. They come in single, twin, or triple pump systems, with some models placing pumps inside tanks for space efficiency and noise reduction in plant rooms.



### PRODUCT CODE STRUCTURE



### PRODUCT FEATURES



**Compact vertical design:** Ideal for installations with limited floor space.



**Space-saving design:** Fits into tighter spaces, including basements or utility rooms.



**Single pump system:** Delivers reliable pressure for smaller buildings or single-floor commercial operations.



**Easy to install and maintain:** Minimal disruption to building operations.



**Quiet operation:** Making it suitable for noise-sensitive environments.



**Efficient energy:** Low environmental impact.



**Efficient use of energy:** Helping to reduce operational costs.



**Perfect for small to medium-sized buildings** that need reliable water pressure without the bulk of larger systems.

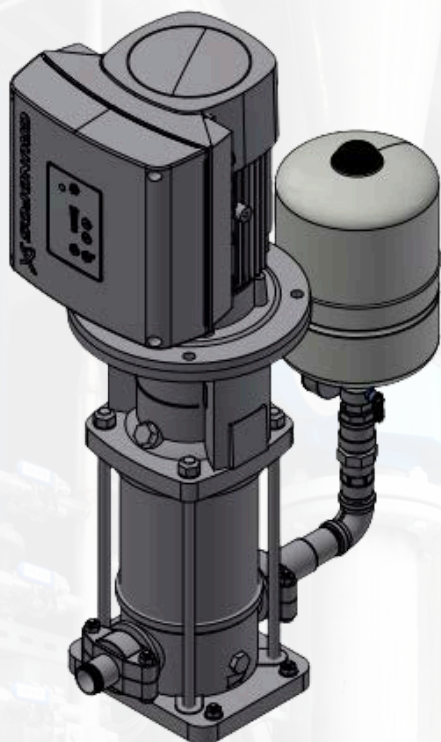
**WRAS approved  
expansion  
vessel**

**Grundfos  
variable speed  
inverter**

**Pressure gauge**

**Grundfos CRIE  
vertical multistage  
pump**

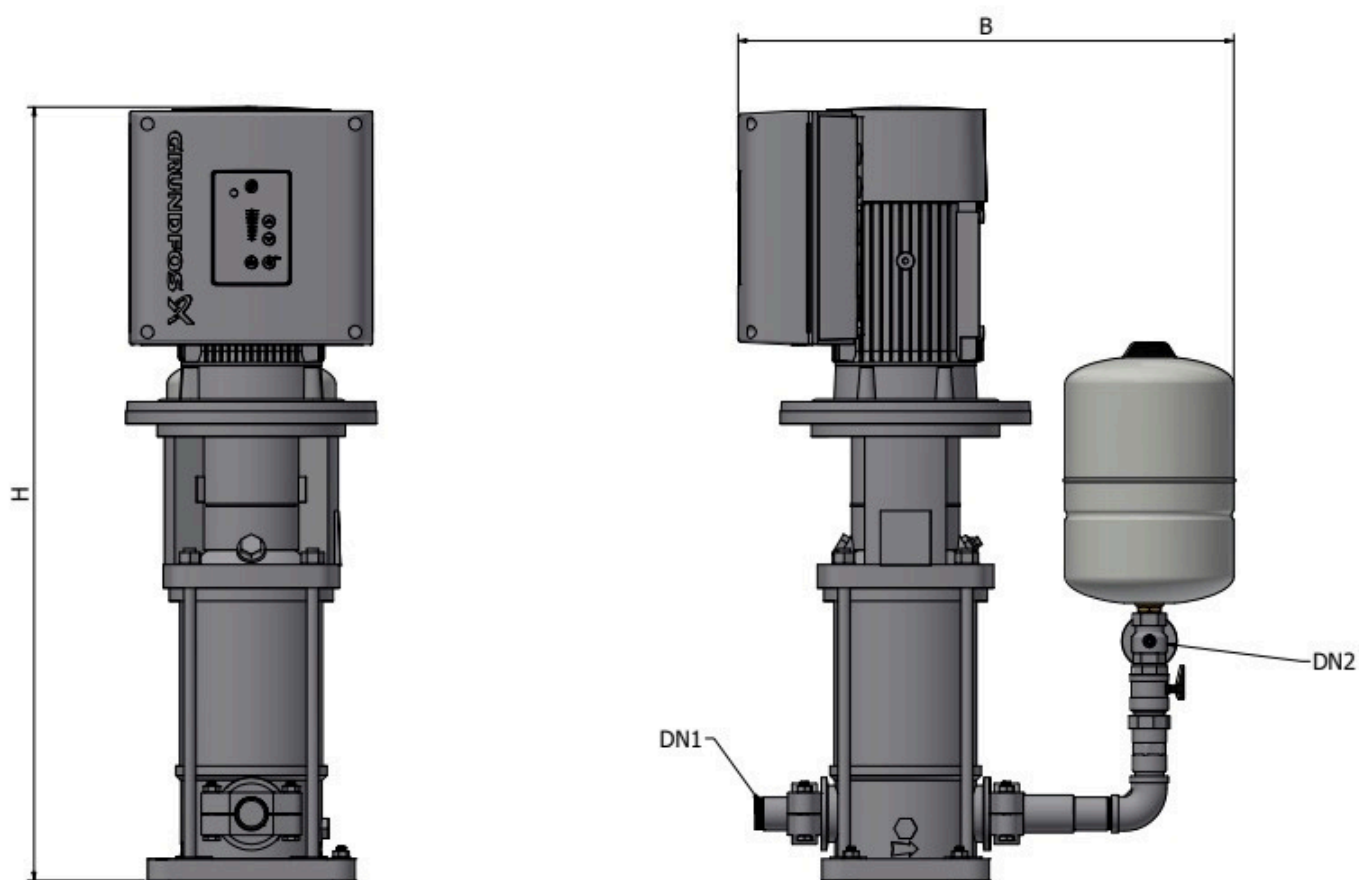




## PRODUCT OVERVIEW

The MYBOOST Vertical Single Cold Water Booster Set is designed for installations where space is at a premium. This system features a vertical configuration and a single Grundfos CRIE pump, making it ideal for smaller properties or where horizontal space is limited, such as in apartment buildings or small commercial settings.

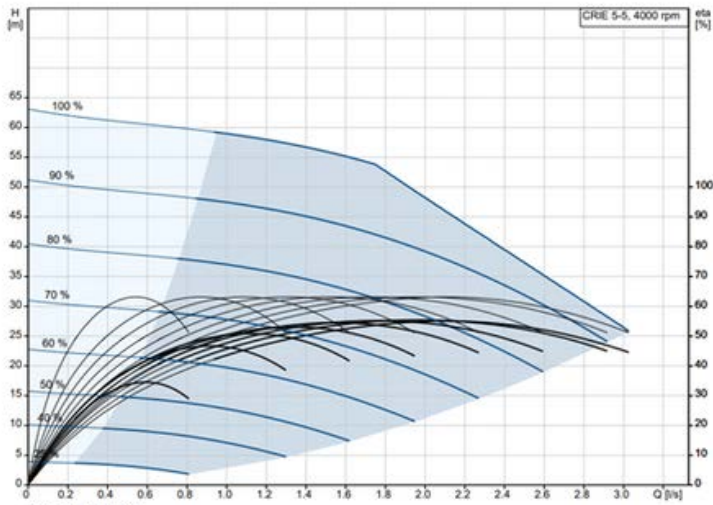
<b>Liquid Handled</b>	Type of Liquid	Water, Moderate solutions, Glycol, Viscous Fluid
	Temperature	Min -20
		Max + 120 C
<b>Max Chlorine Content</b>		500PPM
<b>Max Working Pressure (MPA)</b>		1
<b>Construction</b>	Impeller	Closed Centrifugal Type
	Motor Bearings	Screened Ball Bearing
<b>Pipe Connection</b>	Suction	2" UNI ISO 228
	Discharge	2" UNI ISO 228
<b>Material</b>	Casing	EN 1.4301 (AISI 304)
	Impeller	EN 1.4301 (AISI 304)
	intermediate Casing	EN 1.4301 (AISI 304)
	O-Rings	EPDM
	Shaft Seals	Ceramic / Carbon / EPDM
	Liner Ring	EN 1.4301 (AISI 304) + PPS
	Casing Cover	EN 1.4301 (AISI 304)
	Shaft Seals	EN 1.4301 (AISI 304) wet extension
	Bracket	EN AB-AISI11Cu2 (Fe)(Die cast Aluminium)
	Manifold	304 Stainless Steel
	Baseplate	Galvanised Steel
	NRV	304 Stainless
	Check Valves	304 Stainless
	Pressure Gauge	Glycerine Pressure Gauge



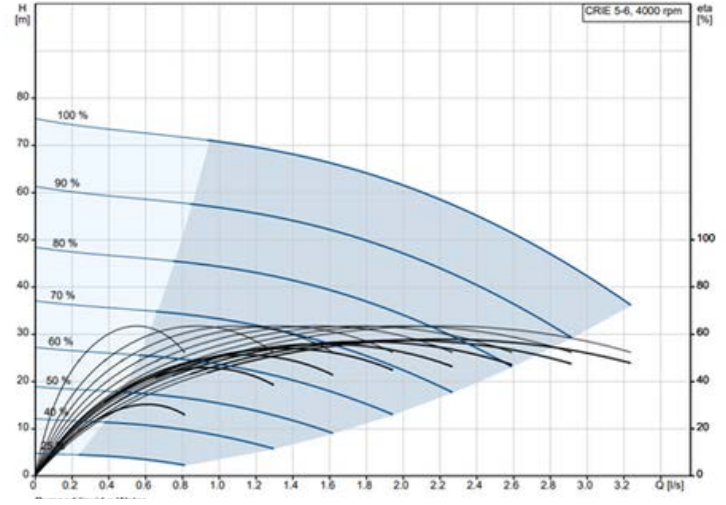
MODEL REF	DN1	DN2	H	B
MY1V CRIE5-5 8	2"	2"	913	450
MY1V CRIE5-6 8	2"	2"	987	450
MY1V CRIE5-9 8	2"	2"	1211	450
MY1V CRIE10-5 8	2"	2"	1005	450
MY1V CRIE10-7 8	2"	2"	1101	450
MY1V CRIE10-9 8	2"	2"	1491	450



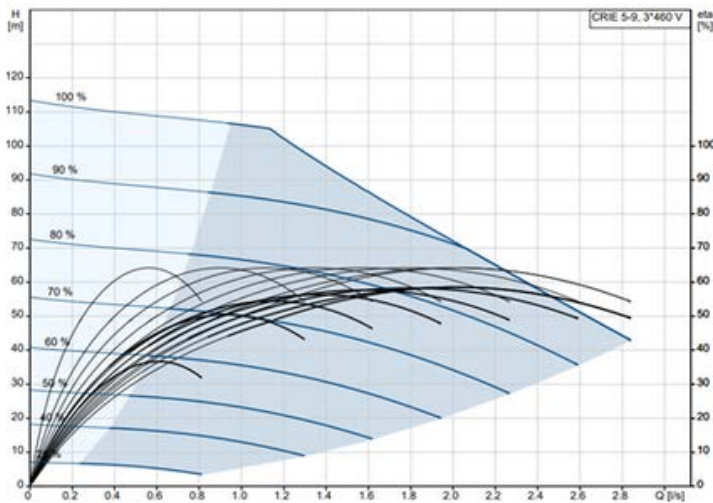
**MYBOOST IV- CRIE 5 - 5**



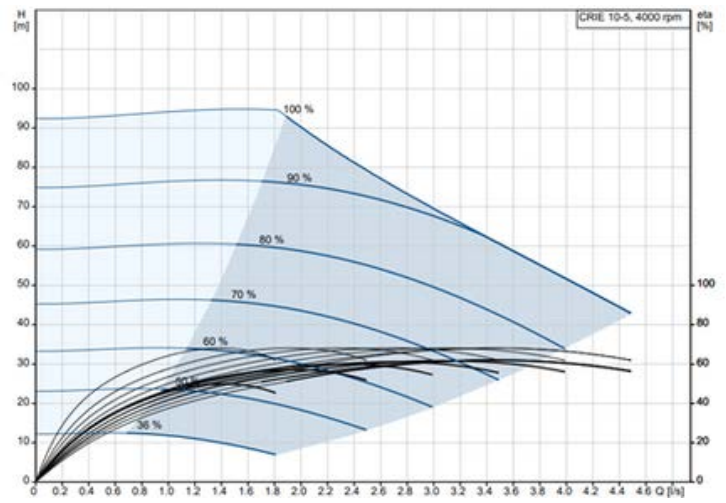
**MYBOOST IV- CRIE 5 - 6**



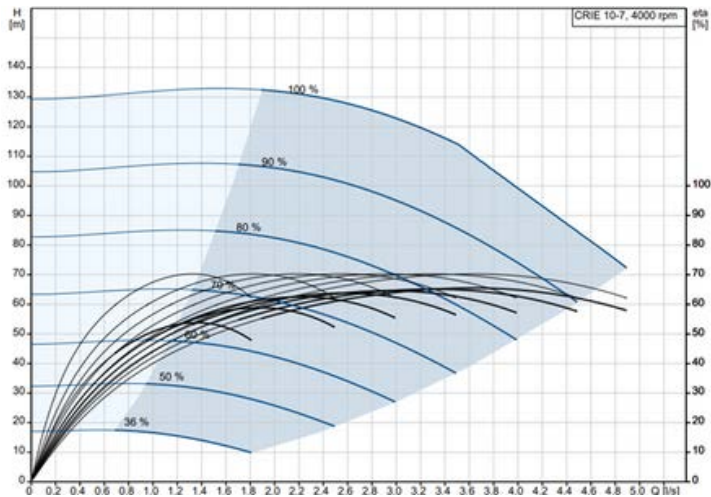
**MYBOOST IV- CRIE 5 - 9**



**MYBOOST IV- CRIE 10 - 5**



**MYBOOST IV- CRIE 10 - 7**



**MYBOOST IV- CRIE 10 - 9**

